

# Emergency Management

## What is Emergency Management?

Emergency Management is a community-wide effort to managing public safety during large scale emergencies and disasters. The LGD of Pinawa's Municipal Emergency Coordinator, Craig Oversby is in charge of Emergency Management planning, volunteers, and resources.

This is done through an organized and structured effort to address:

**Mitigation** – managing or removing the things that create a hazard

**Preparedness** – being ready for an emergency when it happens

**Response** – working to protect life, property and the environment when an emergency occurs

**Recovery** – repairing the damage, learning from what happened, and making improvements

Emergency Management involves everyone in Pinawa – citizens, families, first responders, municipal government, community groups, the provincial government, and community organizations. Everyone has a role to play before, during, and after an emergency.

If a major emergency occurs in Pinawa, it will involve a team effort to ensure the most critical needs are met. Our Emergency Management Plan is based on a team approach. Our approach is to bring community partners together so we make use of all available resources, and make decisions that respond to the most important priorities. For more information on the LGD of Pinawa's Emergency Management Plan, please contact Craig Oversby, Municipal Emergency Coordinator, at [emo@pinawa.com](mailto:emo@pinawa.com)

## How can I be ready?

During the initial hours of any major emergency, the LGD of Pinawa's resources will be focused on re-establishing critical services and in providing care to those in urgent need. If your household has the supplies on hand to take care of yourself for 72 hours, we will be able to respond to those urgent needs. It will also give you the peace of mind that comes with knowing you're ready. Creating a basic kit may be as easy as putting together items you already have such as food, water and blankets. Your kit should be in a container that is durable and easy to carry such as a duffel bag or suitcase with wheels. Keep your kit in an easily accessible location and tell all members of your household where the kit is located. There is a video below to help you build your kit.

## Other Helpful Links:

- [Get Prepared](#)



[Know the Risks](#)



[Make a Plan](#)

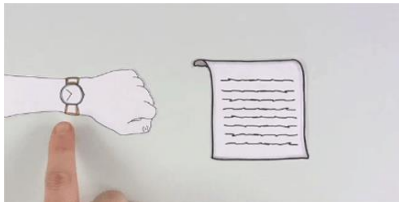


[Get a Kit](#)

## **General Resources**

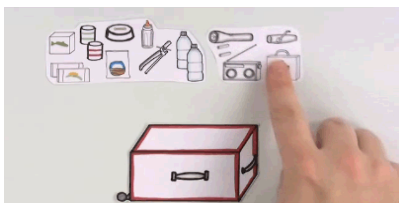
- [Emergency Management Organizations](#)
- [FAQ](#)
- [Help](#)
- [Publications](#)
- [Research](#)
- [Safety tips](#)

## **Videos**



### **Making a Family Emergency Plan**

By definition, emergencies happen when we don't expect them, and often when families are not together. If phones don't work, or some neighbourhoods aren't accessible, what will you do?



### **Preparing a Family Emergency Kit in Plain English**

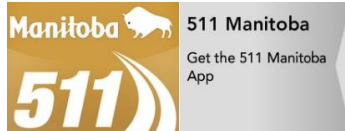
It's your responsibility to start gathering supplies and start thinking about what your family will need for at least 72 hours in an emergency.

## **Fire and Travel Restrictions**

- [Current Municipal Burning Restrictions](#)
- [Provincial Fire and Travel Restrictions](#)
- [Provincial Park Restrictions](#)

## Manitoba 511 - Road and Traveller Information

<https://www.manitoba511.ca/en/>



## Manitoba Lakes

- [Marine Forecasts](#)
- [Extended Forecasts](#)
- [Marine Weather for: Prairies - Manitoba Lakes](#)

## Public Weather Alerts for Manitoba

[https://weather.gc.ca/warnings/index\\_e.html?prov=mb](https://weather.gc.ca/warnings/index_e.html?prov=mb)



Download **WeatherCAN**, our new mobile weather app!

## Severe Weather - What's on the horizon?

Severe weather conditions often develop during Manitoba summers. Thunder, lightning, hail and even tornadoes can develop quickly and have the potential to be extremely dangerous.

That's why it is important that you understand the risks created by severe summer weather and how you can protect yourself - weather or not.

- [Look for the signs](#)
- [Listen for the warnings](#)
- [Be Prepared](#)
- [Thunderstorms](#)
- [Tornadoes](#)
- [After the storm](#)